

lux urbium® 2011 Product Index



Page 2-3
ETC110 LED
Inground uplights



Page 11
ETC140
Inground uplights
Drift Park
Rhyl, North Wales (UK)



Page 13
ETC140 [M] with IO-20°
Inground uplights
Nativity Wall
Melbourne (AUS)



Page 4-5
ETC140 [M] with CTA®
and IO-180°/IO-6°
Inground uplights
Newcastle Sea Baths
Newcastle (AUS)



Page 11
ETC140 [M]
Inground uplights
Carrefour des Arcades
Limoges (F)



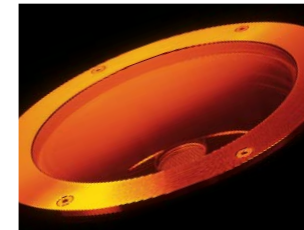
Page 14
ETC140 LED with IO-20°
Inground uplights
Woodland Grove
Wodonga (AUS)



Page 6-7
ETC140 [M] with IO-20°
Inground uplights
Staten Island Memorial
New York (USA)



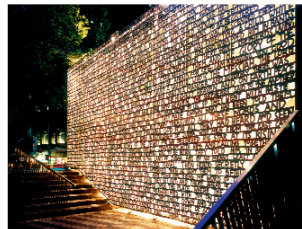
Page 11
RTC140 [A]
Inground uplights



Page 15
ETC130 with CTA®
Inground uplights



Page 8-9
ETC140 LED with IO-20°
Inground uplights
Woodland Grove
Wodonga (AUS)



Page 12
ETC140 [M] with IO-20°
Inground uplights
Nativity Wall
Melbourne (AUS)



Page 16
ETC140
Inground uplights
Viaduct Basin
Auckland (NZ)



Page 10
ETC140 [M] with IO-20°
Inground uplights
Melbourne City Square
Melbourne (AUS)



Page 13
ETC140 [M] with IO-20°
Inground uplights
Melbourne Casino
Melbourne (AUS)



Page 17
ETC140 [A]
Inground uplights
Drift Park
Rhyl, North Wales (UK)

lux urbium® 2011 Product Index



Page 18
ETC120 [M] with IO-20°
Inground uplights
Morodialloc Beach
Melbourne (AUS)



Page 22
ETC140 [M] LED RGB with IO-20°
Inground uplights
Nell Fisher Reserve
Auckland (NZ)



Page 26
ETC130 [M] with IF dichroic filters
Inground uplights
Western Ring Road
Melbourne (AUS)



Page 19
ETC130
Inground uplights
Canberra (AUS)



Page 23
ETC140 [M] with CTA®
and glare shield
Inground uplights
Southport Broadwater
Queensland (AUS)



Page 26
RTC140 [EE]/[A] with IO-180
Inground uplights



Page 20
ETC140
Inground uplights
Chapelle du Broussan
Sainte-Anne-d' Evenos (F)



Page 23
ETC140 [M] with IF-Red
Inground uplights
Holmesglen College
Melbourne (AUS)



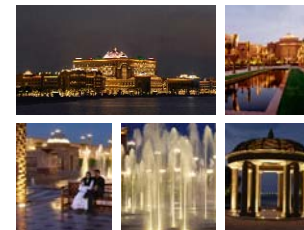
Page 27
RTC140 [EE]
Inground uplights



Page 20
ETC140 [M]
Inground uplights
Federal Park
Sydney (AUS)



Page 24-25
ETC140 [B]
Inground uplights
Nat. Museum of Australia
Canberra (AUS)



Page 28-29
ETC140 [M]
Inground uplights
Emirates Palace Hotel
Abu Dhabi (AE)



Page 21
ETC130 [M]
Inground uplights
Kurhaus Grandhotel
Heiligendamm (D)



Page 26
ETC140 [B]/[M]
Inground uplights
Nat. Museum of Australia
Canberra (AUS)



Page 30
ETC130 [M] with IO-20°
Inground uplights
RAAF War Memorial
Canberra (AUS)

lux urbium® 2011 Product Index



Page 31
ETC130 [M]/[EE] with P20 70 W MH
Inground uplights
Landtag Vaduz (LI)



Page 36
QR1254
Wall luminaires/recessed
Quartier am Salzufer
Berlin (D)



Page 40
STP259
Wall luminaires/recessed
Asia Pacific Trade Center
Osaka (J)



Page 32-33
ETC130 [B] with IO-20°
Inground uplights
Port Philip Estate
Red Hill, Victoria (AUS)



Page 37
SVO259
Wall luminaires/recessed
Hafenpromenade
Eckernförde (D)



Page 41
STI274
Wall luminaires/recessed
Burgplatz Lenzen (D)



Page 34
QR1304
Wall luminaires/recessed
Royal Bank of Scotland
Edinburgh (UK)



Page 38-39
STP254
Wall luminaires/recessed
Medical Research Centre
Canberra (AUS)



Page 42-43
QR1254
Wall luminaires/recessed
Medical Research Centre
Canberra (AUS)



Page 35
STO279
Wall luminaires/recessed
Drift Park
Rhyl, North Wales (UK)



Page 40
STO259
Wall luminaires/recessed
National Assembly for Wales
Cardiff (UK)



Page 44
STI274
Wall luminaires/recessed
WE-EF Technical Center
Neuendorf im Sande (D)



Page 35
STO279
Wall luminaires/recessed
Serpentine Gallery 2008
London (UK)



Page 40
STP259
Wall luminaires/recessed
Place de l'Hotel de Ville
Seynod (F)



Page 44
QRN254
Wall luminaires/recessed
Ploufragan (F)

lux urbium® 2011 Product Index



Page 44
QR1254
Wall luminaires/recessed
Quartier am Salzufer
Berlin (D)



Page 51
XRY274
Bollards
Holdfast Shores
Adelaide (AUS)



Page 54-55
GRY250
Bollards
River Park
Chachoengsao (TH)



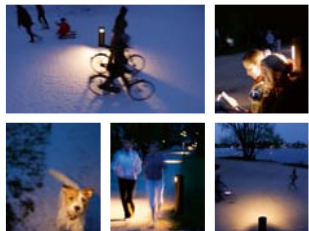
Page 45
TRO259
Wall luminaires/recessed
Posttower
Bonn (D)



Page 52
XRX184
Bollards
Siam Paragon
Bangkok (TH)



Page 56-57
LSP444
Light columns
South Eastern Busway
Queensland (AUS)



Page 46-47
NTY184
Bollards
Hamburg (D)



Page 52
GTY250
Bollards
Mineral House
Brisbane (AUS)



Page 58
LSP444
Light columns
Bürogebäude Sigmund-Riefler-Bogen
München (D)



Page 48-49
NTY184
Bollards
Fort Montluc (F)



Page 52
GTY250
Bollards
Dünenmeer Hotel & Spa
Ostseebad Dierhagen (D)



Page 59
LSP444
Light columns
Communauté de Lapalisse (F)



Page 50
XRZ184
Bollards
Pattaya (TH)



Page 53
GTX164
Border light
Brighton Beach
Melbourne (AUS)



Page 59
LSP444
Light columns
Leuna Werke
Leuna (D)

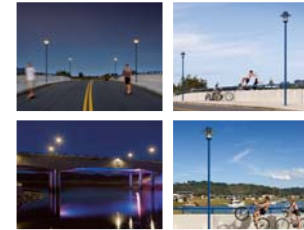
lux urbium® 2011 Product Index



Page 59
LTM440
Light columns
Dovenshire Square
London (UK)



Page 63
LGI444
Light columns
Woody Point Jetty
Queensland (AUS)



Page 66-67
ZA640
Post top luminaires
Endeavour Bridge
Whitianga (NZ)



Page 60-61
LSP444
Light columns
IFC Mall
Hong Kong (PRC)



Page 64
LCI440
Light columns
Varsity Lakes
Queensland (AUS)



Page 68
ASP534
Post top luminaires
Darlington (UK)



Page 62
LGI444
Light columns
Moora Park Foreshore
Brisbane (AUS)



Page 64
LCI440
Light columns
Stadtbeleuchtung Bahnhofstraße.
Duderstadt (D)



Page 69
ASP504
Post top luminaires
Place du Foiraille
Laroquebrou (F)



Page 62
LGI444
Light columns
Quartier Gramont-Coeur de quartier.
Rouen (F)



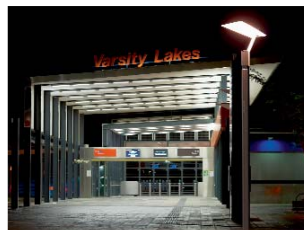
Page 64
LCI440
Light columns
Volksbank
Bispingen (D)



Page 70
ASP530 [S]
Post top luminaires
Wanaka (NZ)



Page 63
LGI444
Light columns
Communauté de Lapalisse (F)



Page 65
LCI440
Light columns
Varsity Lakes
Queensland (AUS)



Page 70
ZA640
Post top luminaires
Dünenmeer Hotel & SpaOstseebad
Dierhagen (D)

lux urbium® 2011 Product Index



Page 71
ASP530 [S]
Post top luminaires
Wanaka (NZ)



Page 77
PFL240 [A]
Street and area lighting
Roma Street Parklands
Brisbane (AUS)



Page 85
PFL240 [S]/[A] ETC120/130/140
FLC131/141 FLC240/250
with snoots and IO-180°
Christchurch Cathedral
Christchurch (NZ)



Page 73
RBL660 [A]
Street and area lighting



Page 78
RFL544 [S] LED
Street and area lighting



Page 88-89
PFL230 [S]
Street and area lighting
Twizel Town Centre
Twizel (NZ)



Page 74
PFL260
Street and area lighting
Drift Park
Rhyl, North Wales (UK)



Page 79
RFL544 [S] LED
Street and area lighting
Strassenbeleuchtung Lenneufer.
Altena (D)



Page 90
PFL240 [S]
Central Park Rocket



Page 75
PFL240
Street and area lighting
Place Wilson (F)



Page 81
RFL544 [S70] LED
Street and area lighting
Bayer Headquarters
Brussels (B)



Page 90
PFL240 [S]
Street and area lighting
Brassall Bikeway
Queensland (AUS)



Page 75
PFL240 [S]
Street and area lighting
Theresienhöhe MK2
München (D)



Page 84
PFL240 [S]
Street and area lighting
Middlehaven
Middlesbrough (UK)



Page 91
PFL240 [S]
Street and area lighting
Browns Bay
Auckland (NZ)

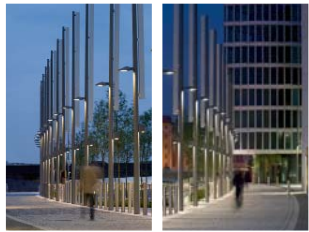
lux urbium® 2011 Product Index



Page 91
PFL240 [S]
Street and area lighting
Brassall Bikeway
Queensland (AUS)



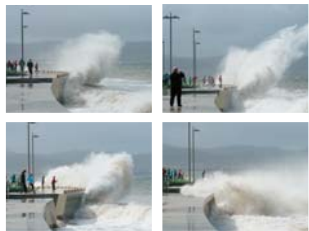
Page 93
FLA441 [S] FLB441 [B]
Street and area lighting
Floodlights



Page 94-95
PFL240 [S] 150 W HPS
Street and area lighting
Temple Quay
Bristol (UK)



Page 96-97
PFL240 [S]
Street and area lighting
Browns Bay
Auckland (NZ)



Page 98-99
PFL240 [S]
Street and area lighting
Sandy Bay
Tasmania (AUS)



Page 100-101
RFL544 [S]/[A60] LED
Street and area lighting
La Chaux-de-Fonds (CH)



Page 102
RFL540 [A]
Street and area lighting



Page 102
FLA441
Street and area lighting
Regent's Canal
London (UK)



Page 103
PFL240 [S] 150 W HPS
Street and area lighting
Technische Universität
Garching (D)



Page 106
NFL340 [A]
Street and area lighting



Page 107
RBL660 [A]
Street and area lighting



Page 108-109
PFL240 [S]
Street and area lighting
Southern Cross Station
Melbourne (AUS)



Page 110-111
PFL240 [S]
Street and area lighting
Sandy Bay
Tasmania (AUS)



Page 112
RBM640 [S]
Street and area lighting



Page 113
RFL540 [S]
Street and area lighting
Aller Bridge
Celle (D)

lux urbium® 2011 Product Index



Page 114-115
PFL240 [S]
Street and area lighting
Jacks Point
Queenstown (NZ)



Page 116-117
PFL240 [S]
Street and area lighting
Woody Point Jetty
Brisbane (AUS)



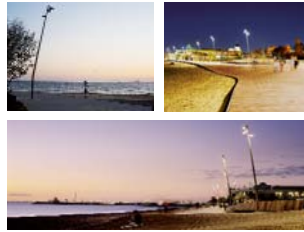
Page 119
FLA460 [S] with rearward
cut-off shield
Area floodlights



Page 120
FLA740 [S]
Area floodlights
Stadtplatz am Kaisersteg
Berlin (D)



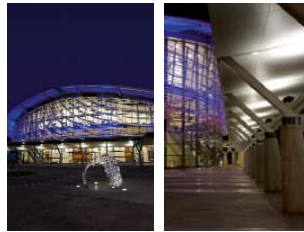
Page 121
FLA440 [A]
Area floodlights
Hossegor (F)



Page 122-123
FLA730 [S]
Area floodlights
St. Kilda Foreshore (AUS)



Page 124-125
FLA440 [S]/[A]
Area floodlights
Goodwill Bridge
Brisbane, Queensland (AUS)



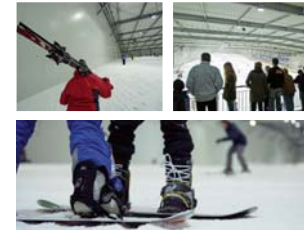
Page 126-127
FLB440 [B]/[MS] ETC130 [M]
Floodlights/inground uplights
Darwin Convention Centre
Darwin (AUS)



Page 128
FLC240 [M]
Projectors
La Bonne Mère
Marseille (F)



Page 129
FLB141 [E10]
Floodlights
East Falls Bridge
Philadelphia PA (USA)



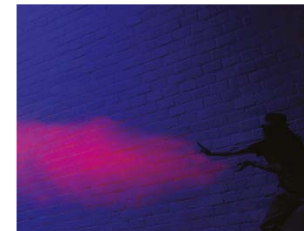
Page 130-131
FL131
Floodlights
Snow Dome
Bispingen (D)



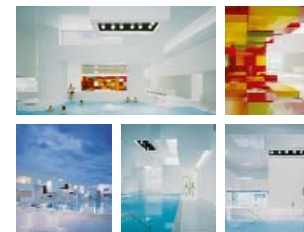
Page 132
FLB440 [M]
Floodlights
Gateway Sculpture Hoppers Crossing
Victoria (AUS)



Page 133
FLB460 [A]
Floodlights
Château de Lavardin (F)



Page 134-135
FLC131 [EE] with IF-Red
Projectors



Page 136-137
FLC141 [M]
Projectors
Les Bains les Docks. Le Havre
Paris (F)

lux urbium® 2011 Product Index



Page 138
FLC141 [B]
Projectors
Aurora Sculpture
Melbourne (AUS)



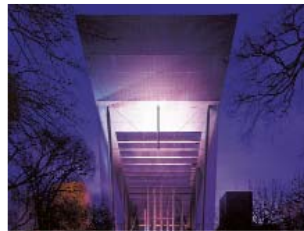
Page 140
FLC250 [M]
Projectors
Shanghai F1 Circuit
Shanghai (PRC)



Page 143
FLC141 [EE] with ET snoot
Projectors
Sydney Opera House
Sydney (AUS)



Page 138
FLC121 [EE] LED
Projectors
38 Waterloo Street
Sydney (AUS)



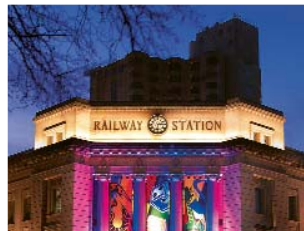
Page 140
FLC250 [EE]
Projectors
Museum of Victoria
Melbourne (AUS)



Page 144
FLC240 [BL] with GOBO
Projectors
Observatory Hill
Sydney (AUS)



Page 138
FLC230 [EE]
Projectors
Le Zenith
Saint Etienne (F)



Page 140
FLC260 [EE]
Projectors
Adelaide Casino
Adelaide (AUS)



Page 145
FLC240 [BL] with GOBO
Projectors
Hobart
Tasmania (AUS)



Page 139
FLC260 [EE]
Projectors
National Carillon
Canberra (AUS)



Page 141
FLC250
Projectors
Place Wilson
Toulouse (F)



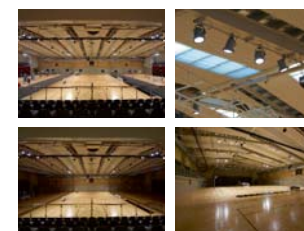
Page 146-147
FLC141 [M]
Projectors
Hume Weir Waterfront
Albury (AUS)



Page 140
FLC260 [EE]
Projectors
Highmark Office Building
Pittsburgh (USA)



Page 142
FLC240 [EE]
Projectors
Cockatoo Island
Sydney (AUS)



Page 148-149
FLC250 (Ceilings)
RAIL66/FLC131[M] (Stands)
Projectors
Logan Indoor Sports Centre
Queensland (AUS)

lux urbium® 2011 Product Index



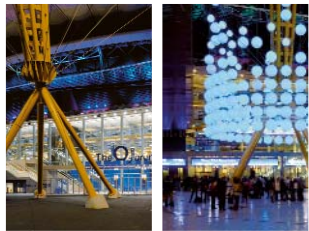
Page 150
FLC240 [EE]/[M]
Projectors
Spencer Street Link Bridge
Melbourne (AUS)



Page 153
FLC131
Projectors
Fontaine Castellane
Marseille (F)



Page 154-155
RAIL66/FLC141 [EE] with ET snoot
Projectors
St. Patrick's Cathedral
Auckland (NZ)



Page 151
FLC240 [M]
Projectors
O2 Arena
London (UK)



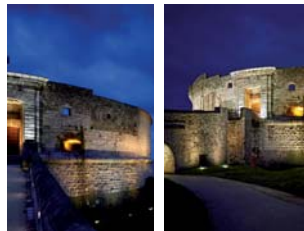
Page 153
FLC210 [EE]
Projectors
King George V Memorial
Melbourne (AUS)



Page 156
RAIL66/FLC131 [M]
Projectors
Varsity Lakes
Queensland (AUS)



Page 151
FLC240 [M] 150 W MH
Projectors
Convent Garden
Brussels (B)



Page 153
FLC250
Floodlights Symmetrical
Abord de la Tour Royale
Toulon (F)



Page 157
RAIL66 FLC131 [M] with ET snoot
and glare shield
Projectors



Page 152
FLC240
Projectors
National Assembly for Wales
Cardiff (UK)



Page 153
FLC250



Page 157
RAIL66/FLC141 [EE] with ET snoot
Projectors
St. Patrick's Cathedral
Auckland (NZ)



Page 153
FLC141 [EE] 35 W MH
Projectors
Hotel Grand Elysee
Hamburg (D)



Page 153
FLB440
Floodlights
National Assembly for Wales
Cardiff (UK)



Page 158
FLC280 [EE]
Projectors
The Auckland Sky Tower
Auckland (NZ)